



ComfortWORKS®



A NEW GENERATION OF BUILDING CONTROL

Look into your building's operation through a new window.



ComfortWORKS lets you access a wealth of system data on your PC screen, then analyze the data using a series of critical management reports.

ComfortWORKS is one of your windows into the Carrier Comfort Network.



When you consider the many variables that can affect a building's operating efficiency, profitability and comfort, the need for a single, all-encompassing management tool is clear. That tool must be powerful enough to address several building systems, including heating and cooling, lighting and energy management. Yet it must be simple enough to be understood and operated by key building personnel at every level. Only one building management tool offers both the ultimate in control and the utmost simplicity: Carrier's ComfortWORKS®.

The Advantages Of Multi-Tasking

ComfortWORKS is a PC-based software interface that fully utilizes the power of Microsoft® Windows™ NT. Integrating the advantages of Windows in an interface designed specifically for building management and control, ComfortWORKS is also the first system offering true multi-tasking. That means you can view several types of data on one screen in real time... check different system elements at once...even change operating parameters and see actual system results immediately.

Sophisticated Yet Simple

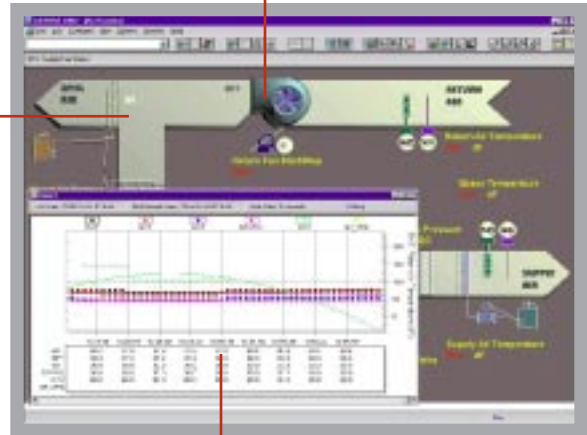
There's never been a building management "window" quite as powerful as ComfortWORKS. Not only can you see more data at once, you can do more at once. Respond to critical alarms while filtering out nuisance alarms. See what's happening in several buildings on a single screen. It's all in a day's work when you choose ComfortWORKS, the only system that combines the building management expertise of Carrier with the multi-tasking power and flexibility of Windows NT.

Customize your WorkSPACE screens...

View Critical Data At Once

Because no two buildings are alike, ComfortWORKS® offers the flexibility to create custom WorkSPACES, each comprised of multiple ViewSPACES, such as graphics and tables. With a custom WorkSPACE, you can see all the critical information about your system on a single screen. For example, create a WorkSPACE screen with graphics of your main chiller and air handler, plus tables showing key operating data for each one. You can then save the finished WorkSPACE so it's available to access time and again. Multi-element WorkSPACES are troubleshooting time-savers, allowing you to adjust the operation of one unit and see how it affects another part of the system... all on the same screen.

With ComfortWORKS, you can get the information you need fast. Link WorkSPACE screens in a logical progression customized for your building and management needs.



ComfortWORKS lets you see your building's equipment operation and easily access time and setpoint schedules – without leaving your office.

With real time trend scanning you can visually determine how a system is behaving. ComfortWORKS allows you to easily view and record this data.



This power plant ViewSPACE shows various equipment operating parameters at a glance.

Reduce troubleshooting time with ComfortWORKS' on-screen interaction. Change temperature setpoints, or force conditions – then view the results and determine action, prior to dispatching a mechanic.

ViewSPACES can use graphics or photos of your actual equipment, for easier analysis of operating conditions.

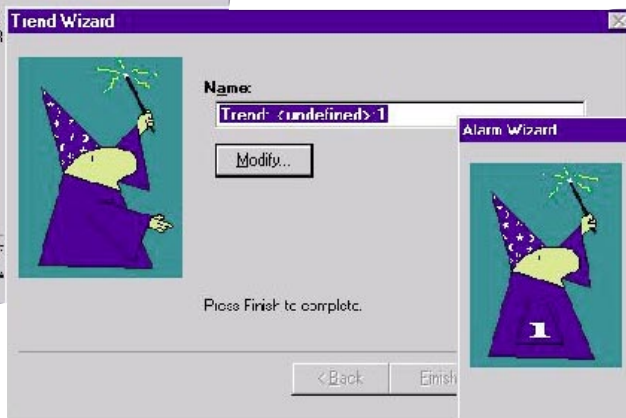
Use Your Existing PC

Thanks to its powerful software platform, Carrier's ComfortWORKS® does not require a dedicated PC. Your other Windows™ applications can be run at the same workstation, simultaneously. So you can be preparing a report in a spreadsheet package and respond to a ComfortWORKS-generated alarm simply by clicking open a window on your PC screen. In addition, local area networked users can access a single ComfortWORKS system. And since there's a single database, when data is added or updated, everyone on the network has access to the new version.

ComfortWORKS provides you with several help wizards to guide you through setting up and modifying non-routine features. The easy-to-use wizards take you step-by-step through creating operator profiles, customizing alarms, setting up trend scans, formatting reports and more.



With the report wizard, you can easily create consumable, runtime or history reports.



With the trend wizard, you can quickly create a chart of operating conditions for examining your equipment's behavior over time.



With the alarm wizard, creating and configuring an alarm for a selected point on your network is easy.

Increase Building Performance And Improve Operating Efficiency

Everything you need to manage and control important building systems with ease and flexibility can be found in Carrier's new ComfortWORKS®. Here are just a few of the system's outstanding features and benefits:

Multi-Tasking Capabilities.

This is a premier feature of the Windows™ NT operating system. There's no need for a dedicated PC with ComfortWORKS, and any other Windows-based software can be run simultaneously. View a building's multiple operating events in real time. Reconfigure equipment and see immediate results.

Local And Wide Area Network Compatibility.

ComfortWORKS is LAN/WAN compatible for server-client use, and clients can use Windows 95 or Windows 98. Multiple users can share a single ComfortWORKS system. Because there is a single database, everyone has access to the most up-to-date information.

Customized WorkSPACE Screen Graphics.

This feature provides a unique way for you to view and manage your system. By combining individual ViewSPACE elements, you can customize WorkSPACE screens with the equipment and operating data that are most important to you. Drawing from the graphics library – or importing your own images in standard PC formats including .BMP, .PCX, .TIF, .GIF and .JPG – you can easily create detailed screens. You can even use graphic animation to depict your equipment in motion.

Super VGA (1024 x 768 pixels) Resolution.

Superior screen graphics and photographic quality let you visualize your system easily, and find the information you need at a glance.

Dynamic Trends.

ComfortWORKS will plot trends from up to six different data points derived from one or multiple controllers. Watch your system's operation in real time as line graphs are created from actual data, which can then be saved for use with popular database programs.

Alarm Routing/Filter Capability.

With ComfortWORKS, you can select critical alarms on an area/controller or level basis. Filter out the alarms you don't want to see, and allow only those alarms critical to your specific responsibility to be routed to you or other appropriate personnel. And you can create custom audible alarm messages using wave files of your choice.

Standard And Custom Managerial Reports.

A wide variety of reports can be created from systems data, allowing you to identify operational trends, improve maintenance planning and maximize energy efficiency. Available reports include alarm summary, consumable history, runtime, system activity and time schedules. Custom reports can be created and exported to any Windows-compatible database or spreadsheet application.

Remote Location Access.

By using standard internal PC modems, dial into your building from a remote PC and view your system just as if you were on site. Use a home PC to check your building during off-hours, or to receive and respond to critical alarms. And with Carrier Autodial Gateways or TeLINKS, you can even connect to several remote buildings at the same time.

Password Protection.

This security feature prevents unauthorized access to the system. ComfortWORKS lets you define custom levels of access. Plus, you select the functions, systems and buildings that can be accessed at each succeeding level. Up to 100 different ComfortWORKS users may be specified.

DDE/DLL Support.

ComfortWORKS is fully compatible with two-way Dynamic Data Exchange and Dynamic Link Libraries, enabling you to communicate data between ComfortWORKS and other systems.



The Perfect Solution for Many Building Applications.



EDUCATION

Ideal for schools that have multiple HVAC systems throughout a campus, ComfortWORKS® maintains and monitors productive comfort levels for all students. Additionally, Local and Wide Area Network compatibility allows your facility personnel to share a single ComfortWORKS System to monitor operating costs and improve maintenance planning.



HEALTHCARE

ComfortWORKS delivers peace of mind while maintaining and monitoring precise temperatures in operating rooms, patient suites, lobbies and cafeterias. Its capabilities allow you to select critical alarms on an area/controller or level basis. Alarms can be routed directly to you or other appropriate personnel. You can also create audible alarm messages using wave files of your choice.



OFFICE

For building owners or building management groups, ComfortWORKS gives you a competitive advantage by insuring the comfort of all your tenants, while containing your energy costs. Management reports allow you to identify operational trends, improve maintenance planning and maximize energy efficiency. Reports can be exported to any Windows-compatible database or spreadsheet application.



RETAIL

ComfortWORKS' remote access lets you dial up a store and view the system as if you were on site. With Carrier Autodial Gateways or TeLINKS, you can connect to several store locations and view their systems simultaneously. Additionally, its security feature allows you to define custom levels of access, preventing unauthorized access to the system.



MANUFACTURING

For accurate equipment adjustments for process cooling or space comfort, ComfortWORKS' ViewSPACES show all your power plant equipment's operating parameters at a glance. Real time trend scanning plots up to six different data points from one or multiple controllers to let you see how any given system is functioning. On-screen interaction reduces troubleshooting time by allowing you to review any actions prior to dispatching a mechanic.



OTHER APPLICATIONS

Super VGA Resolution lets you visualize the actual equipment of any system easily and see the information you need immediately. For increased capabilities, ComfortWORKS "help wizards" guide you through setting up and modifying non-routine features. They take you step-by-step through creating operator profiles, customizing alarms, setting up trend scans and formatting reports, just to name a few.

As the world leader in Heating, Ventilation and Air Conditioning, Carrier is committed to continually improving the quality of comfort we provide to our customers.

But our level of responsibility extends well beyond...

Carrier Corporation has identified six specific areas which directly impact how we, as a world manufacturer, balance our customers' needs for comfort with the environment's needs for responsible consumption.

These symbols graphically represent our six areas of concentration and will serve as visual reminders of the importance of managing our finite resources.

Each one of us at Carrier Corporation believes that, for generations to come, success will not only be measured by the quality of our products and systems, but also by how we have improved the quality of life.

